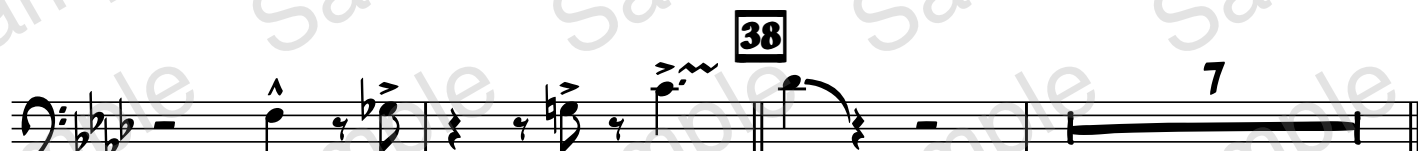
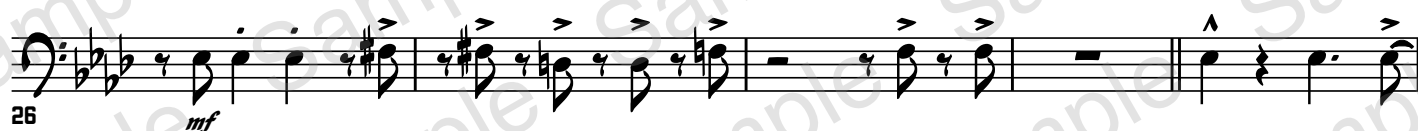


GHEA MUSIC GROUP PRESENTS

**GREY EGGS AND HAM**COMPOSED AND ARRANGED  
BY THOMAS GHEA**[Swing]** ♩ = 240

46 2

Staff 46-51: Bass clef, key signature of two flats. Measures 46-51. Measure 48 has a triplet of eighth notes marked *f*. Measure 50 has a half note marked *mf*. Measure 51 has a half note marked *mf*.

52

Staff 52-56: Bass clef, key signature of two flats. Measures 52-56. Measure 54 is boxed. Measure 55 has a half note marked *f*. Measure 56 has a half note marked *f*.

57 4

Staff 57-64: Bass clef, key signature of two flats. Measures 57-64. Measure 61 has a half note marked *ff*. Measure 64 has a half note marked *ff*.

65 **(Solos - 4 Times)**  
(1st X Only) (2nd & 4th X)

Staff 65-69: Bass clef, key signature of two flats. Measures 65-69. Measure 65 has a half note marked *f*. Measure 66 has a half note marked *p*. Measure 69 has a half note marked *mp*.

70

Staff 70-74: Bass clef, key signature of two flats. Measures 70-74. Measure 72 has a half note marked *mf*. Measure 74 has a half note marked *p cresc.*

75 -1

Staff 75-80: Bass clef, key signature of two flats. Measures 75-80. Measure 77 has a half note marked *mf*. Measure 80 has a half note marked *mf*.

81 97

Staff 81-103: Bass clef, key signature of two flats. Measures 81-103. Measure 81 has a half note marked *f*. Measure 88 has a half note marked *f*. Measure 97 has a half note marked *f*. Measure 103 has a half note marked *f*.

105 2 -1

Staff 105-110: Bass clef, key signature of two flats. Measures 105-110. Measure 109 has a half note marked *fp*. Measure 110 has a half note marked *fp*.

113 3

Staff 113-119: Bass clef, key signature of two flats. Measures 113-119. Measure 113 has a half note marked *mp*. Measure 117 has a half note marked *f*. Measure 119 has a half note marked *f*.